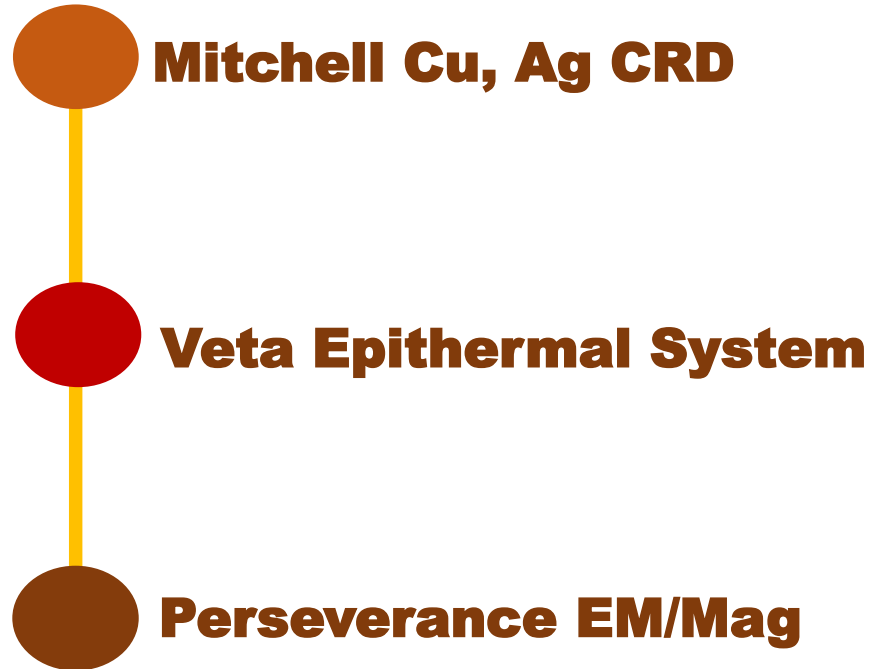


Filling In The Blanks

- 
- Mitchell Cu, Ag CRD**
 - Veta Epithermal System**
 - Perseverance EM/Mag**

Acknowledgements

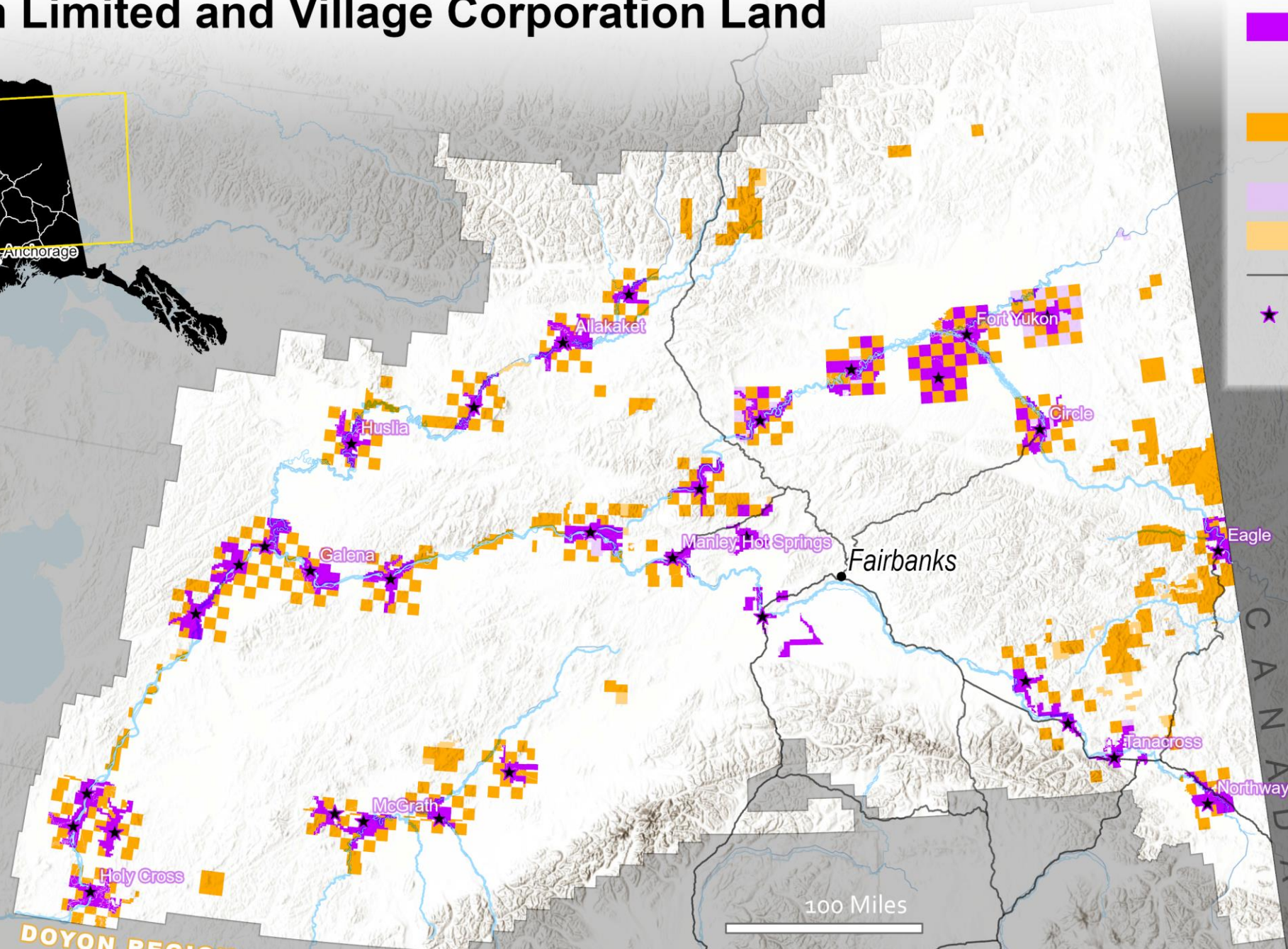
- Aaron Schutt and Doyon
- Big Thanks to Jaenell Manchester
- Piton Exploration and Jesse Jennings Crew
- Marek Welz and Alex Walcott
- Melanie Werdon and the DGGS



Doyon Limited and Village Corporation Land



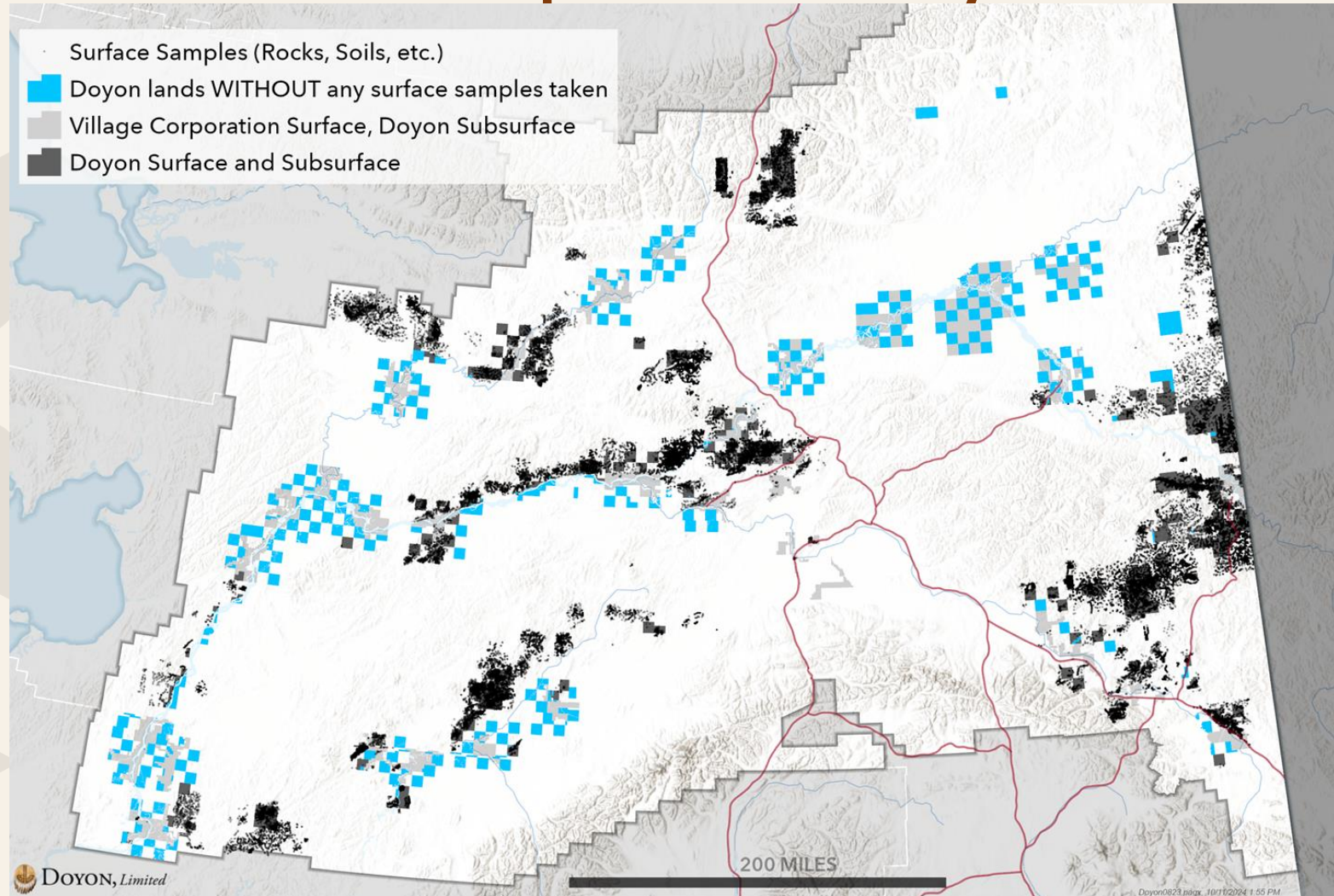
- Village Corporation Surface, Doyon Subsurface
- Doyon, Limited Surface and Subsurface
- Village Selected Land
- Doyon Selected Land
- Major Roads
- Doyon Community



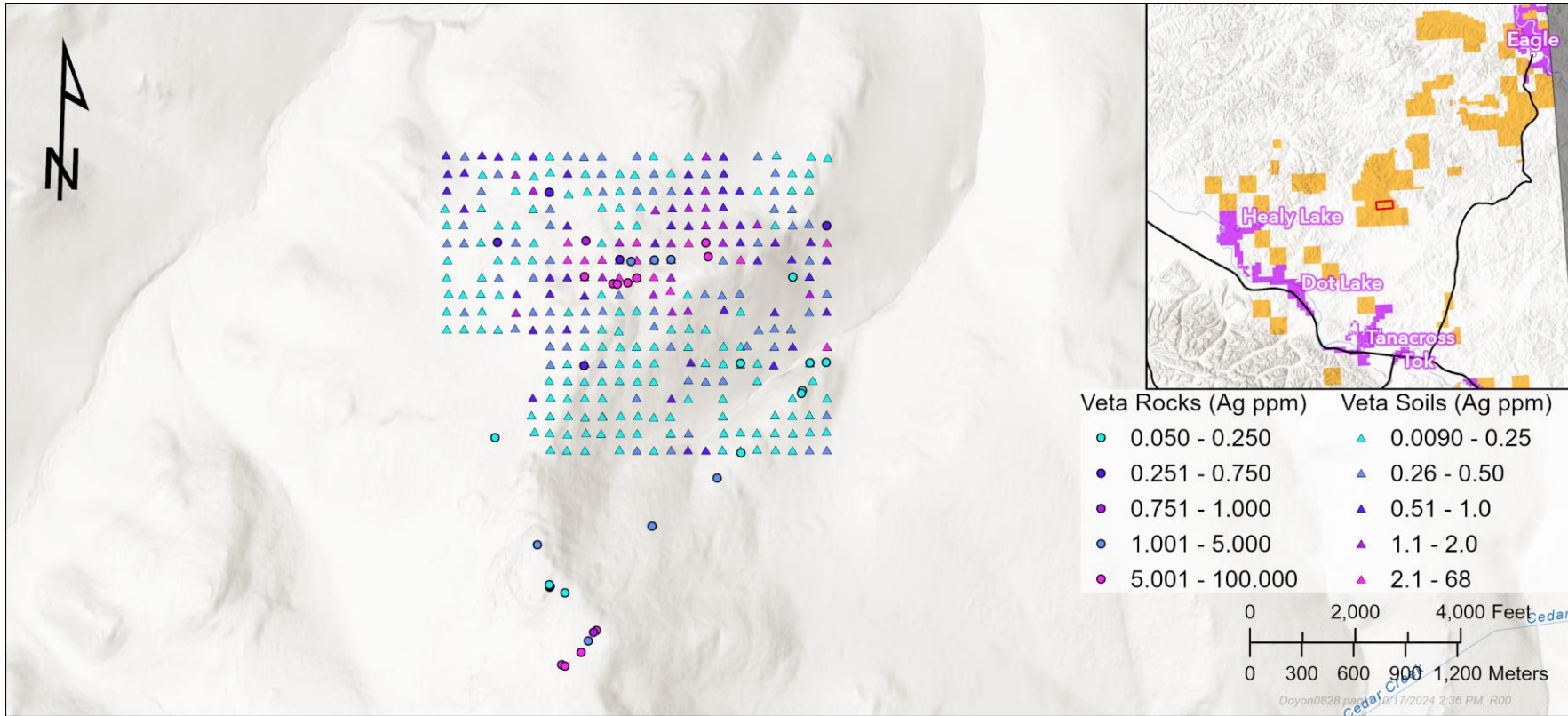
DOYON REGION BOUNDARY

100 Miles

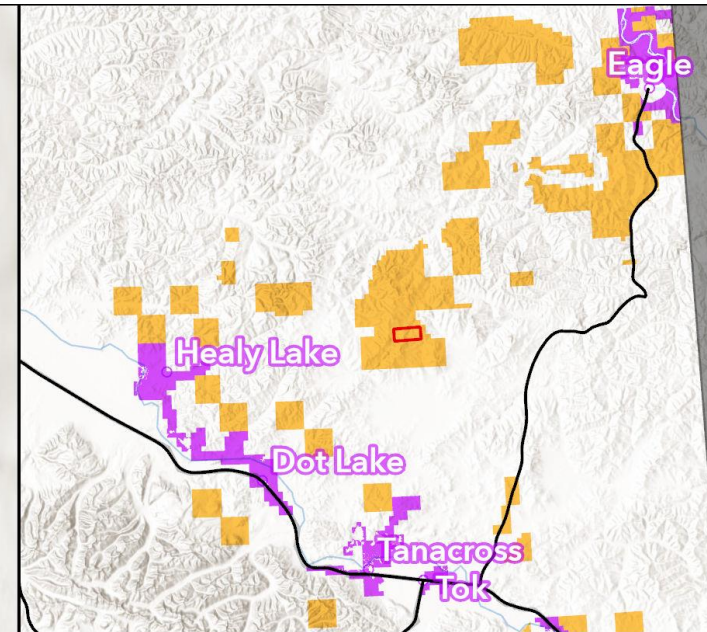
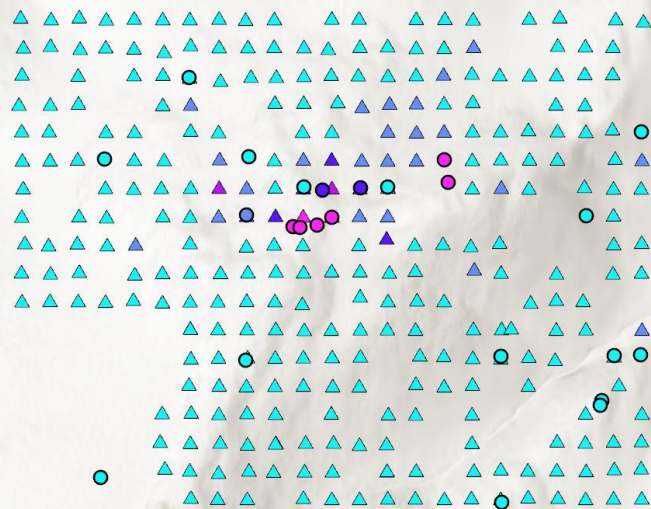
Surface Samples on Doyon Land



Mitchell



- 1km x 500m Cu, Ag Anomaly
- Grab samples of up to 14.7% Cu
- 1135ppm Ag
- South Mitchell Shear hosted vein with Ag samples up to 226ppm



Mitchell Rocks (Cu ppm)

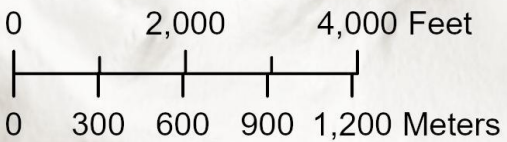
- 4.00 - 100.00
- 100.01 - 250.00
- 250.01 - 500.00
- 750.01 - 10000.00

Mitchell Soils (Cu ppm)

- ▲ 5.01 - 100.00
- ▲ 100.01 - 250.00
- ▲ 250.01 - 500.00
- ▲ 500.01 - 750.00
- ▲ 750.01 - 10000.00

Cedar

Cedar Creek



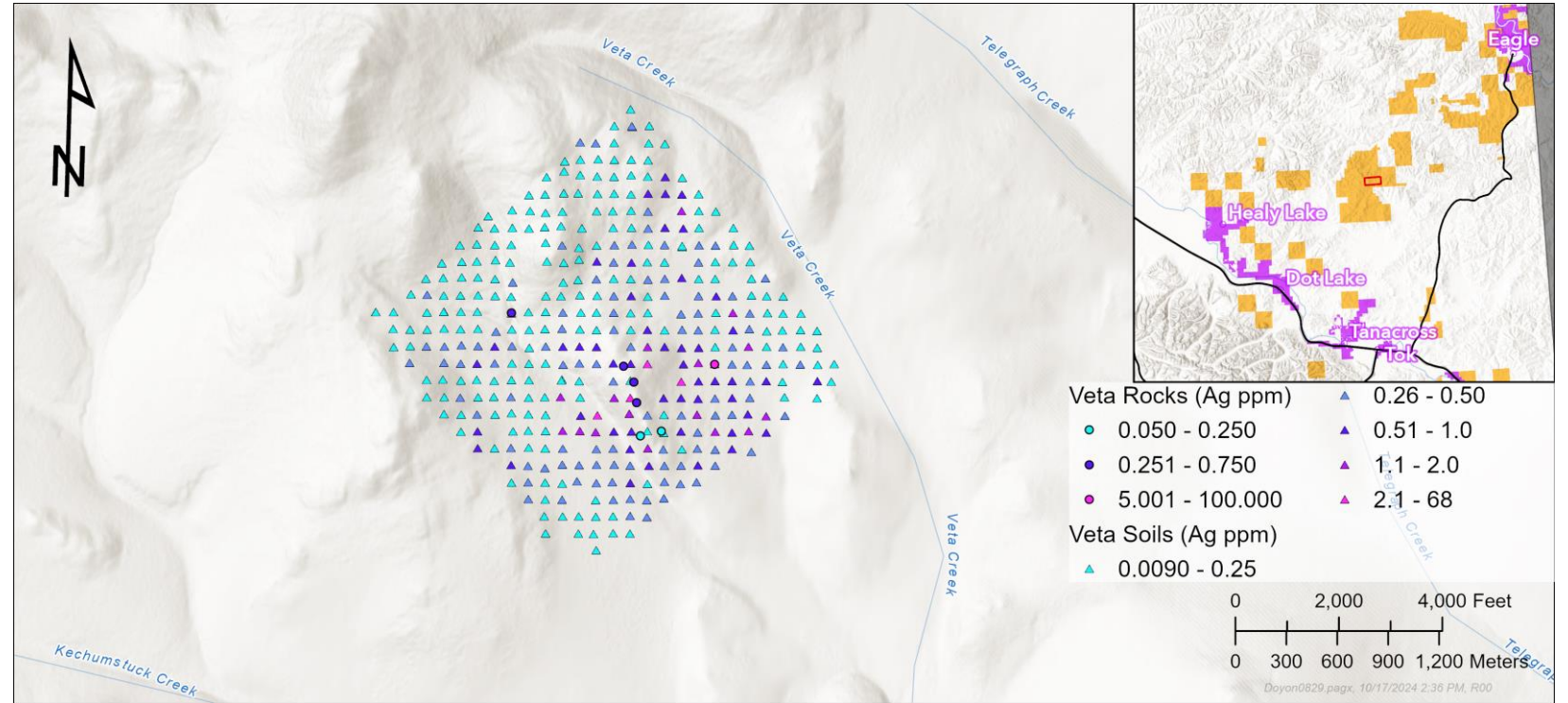
South Mitchell

- **South Mitchell:** NE/SW striking multiphase shear hosted vein system
- Mafic dyke in North Margin
- +500m strike length
- Similar to samples collected in upper Cedar Cr. 2 miles SW



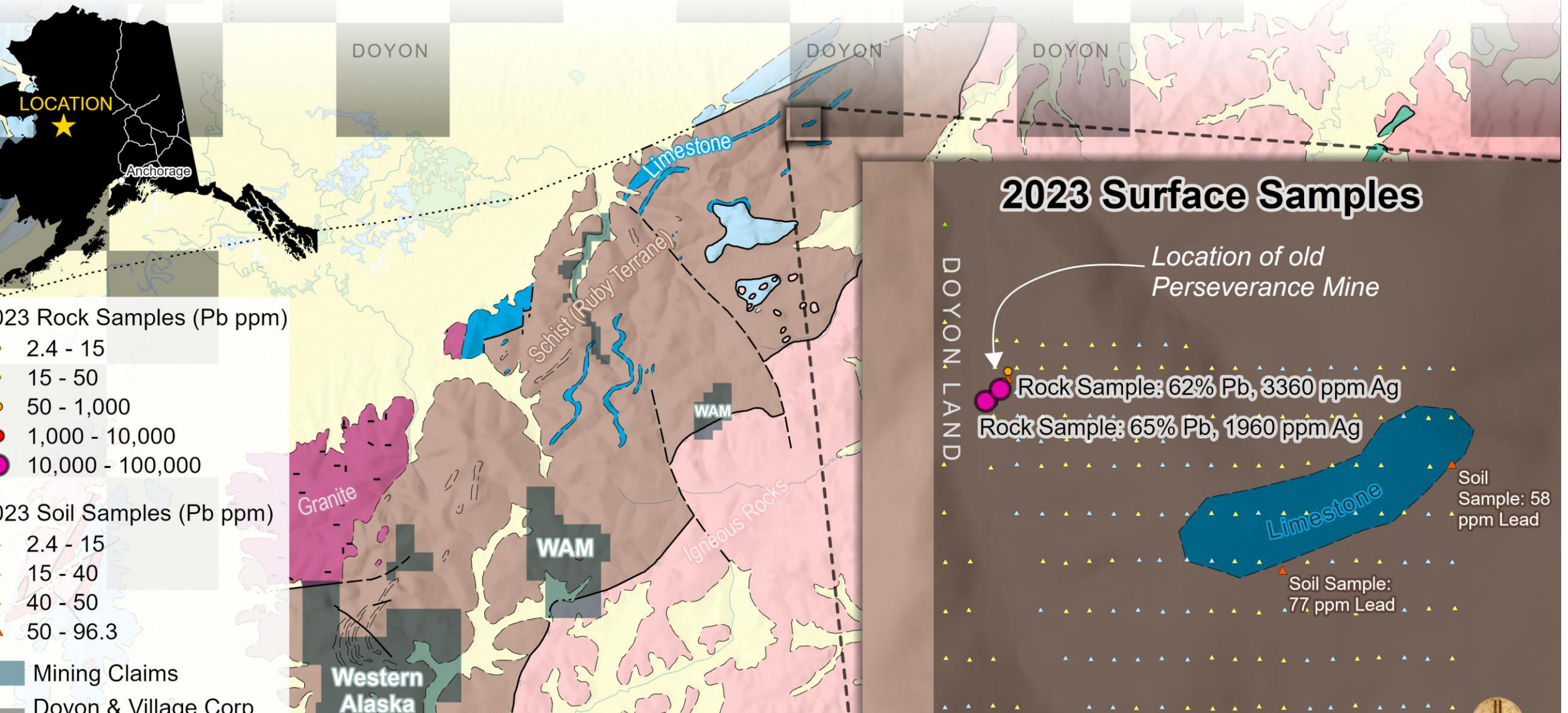
Veta Creek

- Mineralization occurs in Quartz Feldspar Porphyry And Cretaceous granite of Gold Bottom Creek
- 900m x500m+1ppm Ag soil anomaly open to the SE
- Low grade Pb and Zn show Surface samples are distal In the system

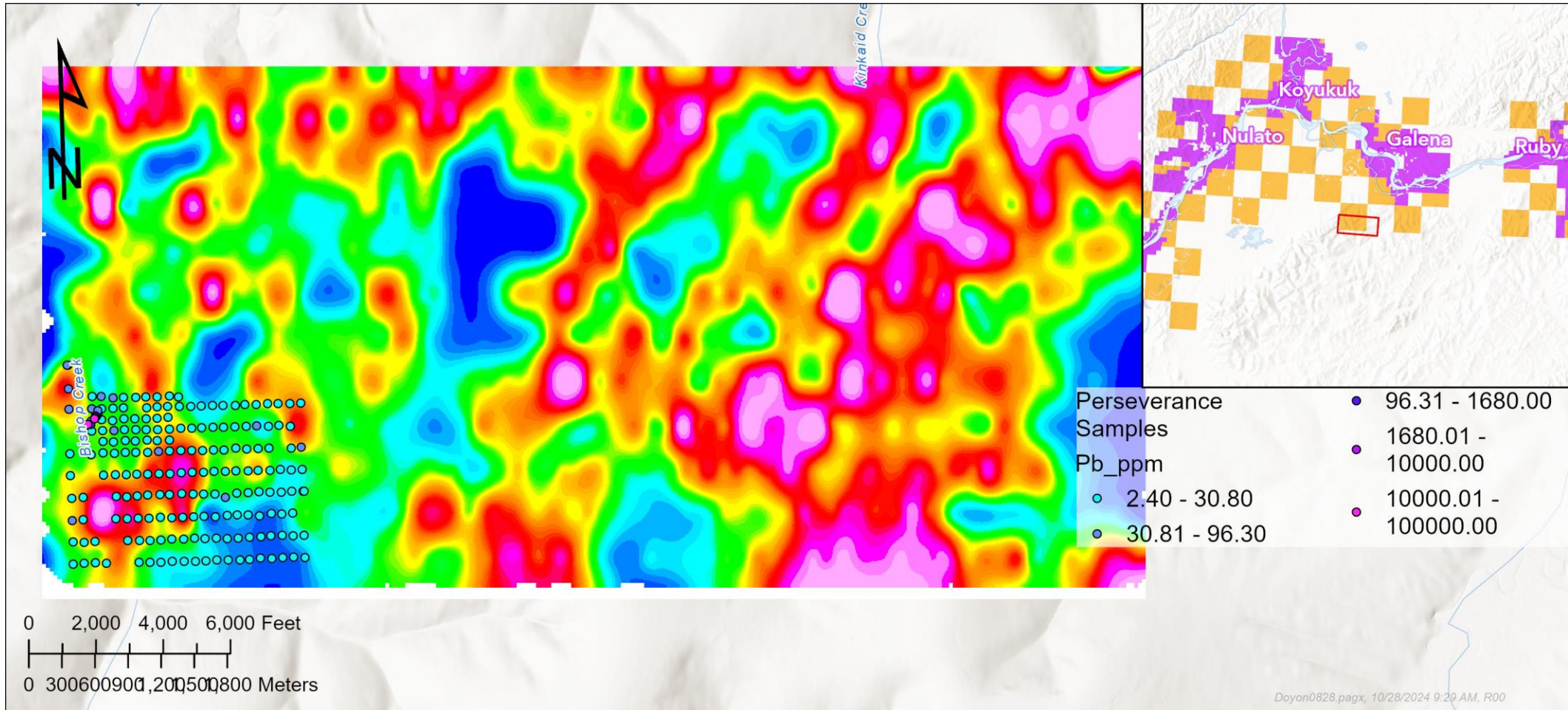




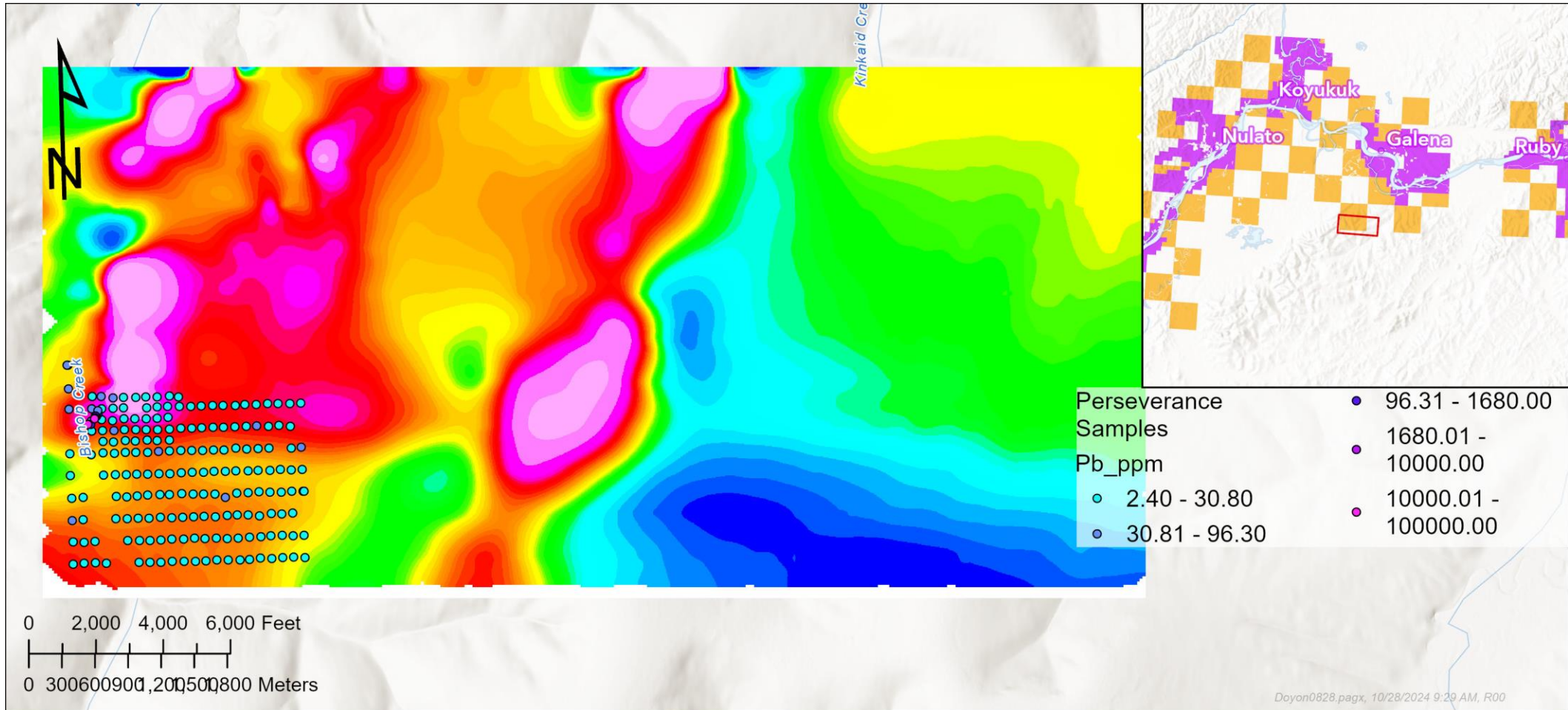
Geology of Perseverance & 2023 Surface Samples



Perseverance Prelim EM



Perseverance Prelim Mag



Sacrifices Were Made





Questions?